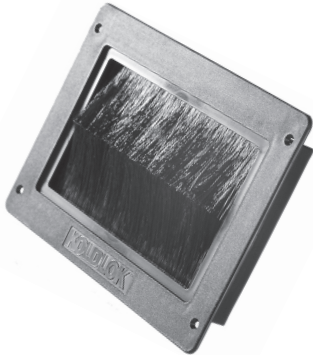


### KoldLok Integral



Model No. 1010

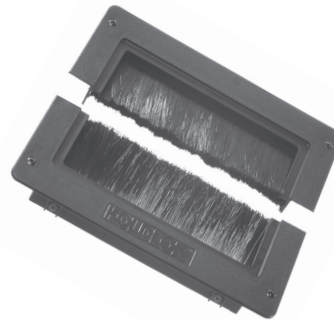
Installation in *new* or *existing* raised-floor tiles prior to the installation of communications or power cabling.

For use prior to server cabinet installation

Minimum Tile Cutout:

- 9 3/16" x 6 3/4"

### KoldLok Split Integral



Model No. 3030

Installation in *new* or *existing* raised-floor tiles where the rack clearance is too low to accommodate a KoldLok Surface Mount Raised-Floor Grommet or other specialized requirements.

Minimum Tile Cutout:

- 9 3/16" x 6 3/4"

For use prior to server cabinet installation

### KoldLok Surface Mount



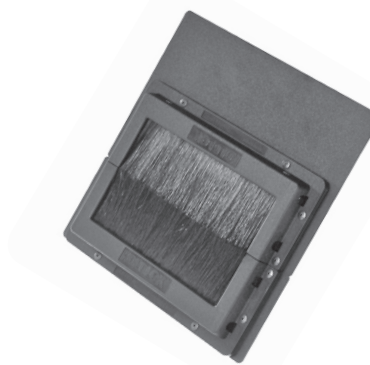
Model No. 2020

Installation in *existing* raised-floor data centers to seal cable openings without affecting operations.

Seals Openings

- 10" x 7 1/4" or less

### KoldLok Surface Mount L & XL



Model No. 2030 (Surface L)  
Model No. 2040 (Surface XL)

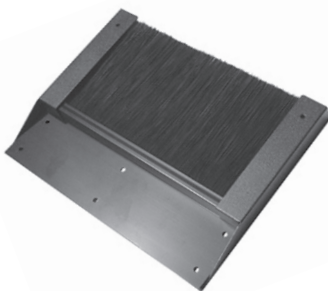
Installation in *existing* raised-floor data centers to seal cable openings without affecting operations.

Seals Openings:

- L - 10" x 9 3/4"
- XL - 10" x 13"

Surface Mount L shown

### KoldLok Extended



Model No. 4010 (3")  
Model No. 4020 (6")

Installation in *new* or *existing* raised-floor data centers, to fill long narrow, above floor, perimeter cutouts.

Seals Openings:

- One 3" brush unit - 22" x 5" hole
- One 6" brush unit - 22" x 8" hole